


METCA WAYBILL 

Metropolitan Division – Train Collectors Association

NEW YORK SOCIETY
OF



CELEBRATING 100 YEARS

MODEL ENGINEERS

1926 • 2026



BRIDGING THE TRI-STATE AREA

METROPOLITAN DIVISION
TRAIN COLLECTORS ASSOCIATION™



Established 1961

SPECIAL ELECTION
ISSUE 

THE WAYBILL

Vol. 42 Issue 1

METCA Officers and Board of Directors 2024 - 2026

President~ Andrew Hibell
Vice President~ Mike Hofmann
Secretary~ Doug Schembs
Treasurer~ Stay Tuned!
Director~ Jim Battista
Director~ Sam Deo
Director~ Pete Fenzel
Director ~ Stu Rankin

CONTACT METCA

Website: www.METCA.org

Jeffery Corrick, webmaster: clint@clintjefferies.com

Letters to The Waybill Editor:

Pete Fenzel, Editor: pdfenzel@gmail.com

Correspondence, membership and mail issues:

METCA Secretary 321 Lamberts Mill Road, Westfield, NJ
07090-4738

Email: Secretary@metca.org

Facebook:

<https://www.facebook.com/METCA-128942873789498/>

Train Collectors Association Membership

Application <https://www.tcatrains.org/become-a-member/join-tca/apply-online/>

METCA Membership Application

<http://www.metca.org/documents/2017-2018%20METCA%20DIVISION%20Application%20with%20logo.pdf>

Train Collectors Association National Officers

President

Vice President ~ Alan Szirony, #93-38401

Secretary ~ Katie Elgar, #HE94-39348

Treasurer ~ Craig Kasmin, #17-72483

<http://www.traincollectors.org>

The views expressed by the contributors to this publication are their own and not necessarily those of The Waybill editor or of the Train Collectors Association

TCA MISSION STATEMENT

To develop an appreciation of and to preserve an important segment of history~ Tinplate Toy Trains~ through research, education, community outreach, fellowship, establishment of collecting standards, and to promote the growth and enjoyment of collecting and operating toy, model, and scale trains.



Inside This Issue:

President Andrew's Message
Mystery Motor Challenge
METCA Kids Club Modular Layout
METCA Elections
Happy 100th Birthday, NYSME!
News From the METCA Store
METCA-NYSME Train Show April 11th

Coming in the next Waybill:

Stay tuned for details on METCA officers and directors election results; read about local METCA "Meet-and-Greets" and train show opportunities; find exciting buying from the METCA Store; and announcements from our new METCA Kid's Modular Railroad team!

Asking for your help!

This is your Waybil, Folks! We want to hear from our MIGS about what they are doing it this hobby. Send us news, a photo(s), or a story. See your name in the byline! Send your info to pdfenzel@gmail.com

On The Cover:

Our good friends at the New York Society of Model Engineers are celebrating the Centennial of their founding. We celebrate too, with a story of the Society's founding. **Big Election news too!!!**

Has your information changed?

Please submit changes to your E-Mail address, Phone, or Mailing Address to the METCA Secretary at secretary@metca.org, by regular mail to:
METCA Secretary
321 Lambert's Mill Road
Westfield, NJ 07090-4738



March 2026 – Andrew C. Hibell

President's Message:

I hope everyone is well rested from all the snow we had this winter, and it might not be over yet. Train shows this year were something else. First, the Big "E" Amherst in Springfield, MA dealt with subzero temperatures on Saturday and a blizzard on Sunday. Not to be outdone, the First Frost Allentown, PA closed early on Sunday with a blizzard heading to the east coast in the afternoon. The shows were still a great time on Saturday and people from all over still showed up, people just love this hobby.

As you are aware by the email sent out from the TCA National office. The National Board of Directors, consisting of the 20 Division Presidents and the 4 elected officers voted to terminate the membership of METCA member and current TCA President Kevin Quinn on February 25, 2026. I am restricted from publicly announcing the vote, but I will say that I voted against his termination.

In April, ETCA Division will be holding elections for the 2026 – 2028 cycle. The President, Vice President, Secretary, Treasurer and 4 Directors are all up for election, please do your part and make sure you vote. Remember, if no one is running for an office, METCA allows for write-in candidates.

Over the next few months, METCA will be out in full force. We will be attending the Edison Greenberg show on March 28th and 29th. We will be holding our joint NYSME/METCA show on April 11th at St. Joseph's Church in East Rutherford, NJ. We will be wrapping up our spring shows by attending the Spring York Train show with tables in the Orange Hall on April 23rd, 24th and 25th.

The 72st National TCA Convention will be held in Grapevine, TX from June 21st to June 27th. Registration is open, go to the TCA website, www.tcatrains.org and follow the link there.

Our division could not be the best it is without you. Many members help out in their own way. One member for example is Stuart Rankin, besides being Past National President and the Chair of National convention cars, still finds the time to be involved in METCA, he tirelessly continues to design, manage sales, pack and ship METCA cars and engines to make this Division one of the best in the TCA. Mike Hofmann, METCA VP is our liaison with the Somerset 4-H Trainmasters keeping the youth involved in trains. Mike is also the liaison for the METCA kids club Module train layout. The Division would not be complete without the help of our Division officers and Directors, Doug Schembs; Secretary, Sam Deo, Peter Fenzel (our new Waybill editor) and Jim Battista. Each one of them adds their own special expertise and knowledge to make your Division stay on track.

I hope everyone will enjoy the summer with either family and friends and I am looking forward to seeing all of you at one of our upcoming train shows this spring. If this is my last President message, I would like to thank all of you, the members for allowing me to serve you for the last 4 and half years. When you're at a train show and you see the big orange METCA logo, stop by and let us know you are a METCA member, together we can make this Division the best it can be.

Riding the rails together,

Andrew



New METCA Members who joined since the Fall/Winter 2025 issue of the Waybill

Welcome aboard and please stop by the METCA tables at upcoming shows
and introduce yourself.

Arthur Todd	Homewood, Il
Anthony P. Cassone, Jr.	Southold, NY
James Dougherty	East Brunswick, NJ
Paul Conroy	Phoenixville, PA
Ethann Browne	Oswego, NY
Michael Preston	Omaha, NE
Larry Landes	Livingston, NJ
Michael Deloreto	Hopatcong, NJ
George Yarusavage	Norwalk, CT
Theodore Ochs	Wallkill, NY
John Weismiller	Davidsonville, MD
Robert Herr	New Holland, PA
Michael Fritschie	Morristown, NJ
Douglas Burrell	New Brunswick, NJ
Richard Kloss	Allentown, PA

MYSTERY MOTOR CHALLENGE

For the next several issues of The Waybill we will test your knowledge of once popular, but now obscure, motors from the prewar and postwar eras. We call this test “The Mystery Motor Challenge.” Here is how it works:

On the back page of this issue of The Waybill you will see four (4) photos of a model train engine motor. The photos show the same motor from the top, bottom, right side, and left side. There is enough information in these photos for you to identify the motor itself and the model train engine it powered.

If you can identify the motor and the engine it powered, you are definitely awesome! Accordingly, all METCA members who successfully identify the motor by its model number, and the name of the engine it powered, will have their names inscribed on a “Certificate of Awesomeness,” which will be published in the next issue of The Waybill, and emailed to them. Here is a sample of the Certificate of Awesomeness:



You may submit as many guesses as you want, but it is best to be truly awesome with one guess. Email your submissions to Pete Fenzel, Editor of The Waybill, at this address: pdfenzel@gmail.com. Place “Mystery Motor Challenge” in the subject heading of your email. The deadline for this Challenge is August 31, 2026. Good luck!

Two METCA Members correctly identified the Mystery Motor and the engine it powered from the last issue of The Waybill. Lester Mathis and Mark Ranzie both identified the 1060-200 Motor which powered the Lionel 1060 Scout locomotive, and which was made from 1959 to 1963.



Lester and Mark both received their Certificates of Awesomeness, and we are proud and delighted to publish their CofA's here! Please note that Mark's certificate is emblazoned with an oak leaf cluster, indicating that this is his second award.



Attention Scoutmasters!

To earn a Railroading Merit Badge a scout must perform many tasks, learn a great deal, and overcome many challenges. METCA is here to help. We invite all scoutmasters and Council leaders to explore the ways in which METCA may assist you, and your scouts to earn their Railroading Merit Badge. Address your inquiries to Secretary@metca.org.





**** METCA 2026 Election****

Online voting for the METCA Board of Directors will begin on Wednesday, April 1st, 2026, at 12:01 AM and end on Thursday, April 30th, 2026, at 11:59 PM. The term of office will run from July 1st, 2026, to June 30th, 2028. Each **Regular** METCA member in good standing with an email address on file, will receive an **"Invitation to Vote"** email, from Election Runner. It will include your unique voter log in information. To vote, you only need to click on the link in the email. Anyone who is not comfortable with clicking the link in the email can go to:

<https://vote.electionrunner.com/election/9Maar>

directly and enter their voter ID and email address as it appears in the email to log on and vote.

Please note that the election link will not be active until voting commences on April 1st, 2026.

Paper ballots will be mailed to those Regular members in good standing who opted to receive the "Waybill" by USPS mail. If any other Regular members prefer to vote by paper ballot you must contact the METCA Secretary either by email or phone and one will be mailed to you.

Remember that all ballots must be received by April 30·2026.

Email secretary@metca.org

Phone 908-208-8134

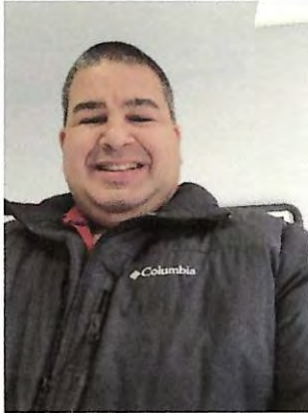
Qualifications for METCA President

No METCA members in good standing have placed their names in nomination for the office of President of the Metropolitan Division. Accordingly, under our bylaws the office may be filled by write-in votes. Write in candidates, however, are restricted to those who satisfy the following three qualifications

1. Is a member in good standing;
2. Has served on the METCA Board of Directors;
3. Has served on the BOD for at least one term before the beginning of the term for which nominated.

The METCA MIGS who meet the qualifications to be considered for the METCA President office, and who have not removed their names for consideration of write-in votes, are as follows:

Andrew Hibell
Mike Hofmann
Rem Hunnewell



Michael Hofmann
Avenel, NJ
TCA 16-72226

Objectives:

I, Michael Hofmann, am running to be re-elected as your Vice President of the Metropolitan Division. When my son became so into trains is when I finally learned about and joined the TCA in 2016 and then METCA in 2017. Prior to this I was unaware of such organizations dedicated to all there is about the model railroad life. My son is now a 5th year in the Somerset 4-H Trainmasters.

The 4-H Trainmasters is our METCA Kids Club and have sharp minds on the railroad in every aspect. As I have been working with them, there are many moving parts and time to have them participate in events.

New to METCA is the METCA Kids Club Module Layout that I worked on bringing to the Division. I am the current chairman and it's a work in progress as we are now starting to get ourselves known to other events we will participate where we can.



Douglas Schembs, Jr.

Westfield, NJ

TCA 93-36718

Objective

To serve as METCA Secretary

Work Experience

I retired after 38 years working as a Network Tech at Verizon.

METCA

I joined TCA in 1993, METCA in 2008, LCCA in 2014 and the Ives Train Society in 2020. Upon retirement from Verizon, I had more time to devote to this wonderful hobby, so I started representing TCA and METCA at Greenberg, WGH Shows, Allentown and York Shows and eventually helping with registration and promoting TCA and METCA at our own train shows. In 2015 I was the registration co-chair for the TCA National Convention hosted by METCA in Somerset, NJ. In the past few years, I have enjoyed helping to develop and support the Somerset 4H Trainmasters, METCA's Kid's Club. In addition to overseeing and updating the membership records, I currently scan each issue of TCA's "National Headquarters News" for new members in the METCA footprint and prepare a packet of information about METCA and the benefits of joining which I mail to each prospective member. I was elected to METCA's Board of Directors in 2016, serving in that position until I was appointed METCA Secretary in July 2019, a position, if reelected to in 2026, I will do to the best of my ability.

I will continue to support and encourage train enthusiasts to become members of TCA and METCA. New members bring fresh ideas to the table that will keep our organization fresh and growing into the future. Since becoming active in METCA I have met so many wonderful people. The level of friendliness, assistance and camaraderie is far more than I ever imagined. I feel I have found an extended family and I hope that it never changes.



CRAIG KASMIN
LIVINGSTON, NEW JERSEY
TCA 17-72483

Objective: To serve as Treasurer of Metropolitan Division

TCA Experience

TCA National Treasurer 2024-2026

METCA Division Treasurer 2019-2024

METCA Board of Directors 2018

Professional Experience

Current role: Vice President of Financial Control, Commercial Insurance Industry

Prior accounting roles in Banking, Consumer products and Advertising

METCA and TCA Activities

During my five years as Treasurer for METCA, I kept a keen eye on revenue and expenses while working hand-in-hand with the board of directors to support opportunities that enhance the experience of our members. Actively supported and participated in METCA's programs to grow membership. Increased investments by more than half, finding the best investment opportunities to ensure the long-term success of the division.

As TCA treasurer, I brought in additional accounting support for the National Business Office bookkeeper/office manager. We are currently exploring changes to the accounting platform to better integrate other TCA reporting systems that will reduce time and effort in completing the monthly accounting close process. I drafted the 2024-25 and 2025-26 budgets, which brought better clarity in our financial reporting and further attention to the future financial challenges faced by our wonderful organization that must be addressed now instead of pushed off until later.



James Battista
East Rutherford, NJ
TCA 20-74793

Summary

To run for Director of Metropolitan Division

Passionate train enthusiast and collector
Member of the TCA and the Metropolitan Division for 6 years
Director for the past two years
Atten train shows and conventions
Involved in the METCA Kids Cluv

Education

Bergen County Vocational and Technical High School
Stationary Engineering Hackensack, NJ 06/79
High School Diploma
Black Seal high pressure in charge boiler license

Skills

Communication skills

Experience

NJ Transit

Conductor Newark, NJ 02//2000- Present
Coordinate crew activities, inspect equipment, check tickets and handle emergencies while keeping trains on schedule

Bergen County Sheriff's Department

Corrections Officer Hackensack, NJ 05/1987-02/2000
Maintain security and order in jail, supervise inmates, enforce rules, and conduct searches for contraband and ensure facility safety.



Sam F. Deo, Jr.

Pequannock, NJ

TCA 05-59610

Objective: To serve as Director of Metropolitan Division

Division

- Member of the TCA since 2005
- METCA Treasurer 2010 to 2013
- METCA Board of Directors 2014 to present
- **METCA Waybill Editor 2014 to 2023**

Background

- BA in Communications from William Paterson University, Wayne NJ
- Service Delivery Manager Ericsson Inc, 1996 to present
- Married for 20 years to my wife Donna, we have two children, Jake 14 y/o and Max 13 y/o
- I've been collecting and running trains since I was 6 years old.
- My train collecting is made up of reproduction and original prewar tinplate O and Standard gauge.

TCA Goals

Along with promoting this great hobby we all share I want to ensure that the TCA moves forward. We can't forget our past but we must look ahead to keep our current members' interest as well as bringing in new members. To do this we need to continue to expand our website as well as utilize social media to get the word out about the TCA and all it has to offer.

Peter D. Fenzel
TCA 18-73568
pdfenzel@gmail.com
(201) 446-5334
Mahwah, NJ



Electoral Objective: Re-Election as a METCA Director

METCA Goals:

1. Actively plan, staff, participate in, and support METCA clubs, shows, and events.
2. Grow METCA membership through relationship building with local train clubs, youth programs, higher media visibility, and leadership service for TCA events.
3. Secure a sound financial future for METCA through identification and resolution of systemic risks, and active support of METCA sales efforts.
4. Enhance METCA presence in the metropolitan region.

Education:

Archbishop Stepinac High School
College of the Holy Cross, B.A. in History *cum laude*
Fordham Law School, Juris Doctor

Work History:

Law Office of Peter D. Fenzel, 1993 - present
McDonald, Herbermann & Fenzel, 1984 - 1993

Organizations and Memberships:

New York State Bar Association
New York City Bar Association
Rockland County Bar Association
Bergen County Historical Society
Knights of Columbus
Church of the Presentation,
Men's Cornerstone Leadership Team
Former Cub Master, Pack 44
Former: Little League Coach, Girls' Softball Coach,
Girls' Soccer Coach, Biddy Basketball Coach
Oceanaires Barbershop Chorus

METCA Experience:

TCA Member, 2018- present
METCA Member 2018 - present
METCA Board of Directors, 2019-present
Provide *pro bono* legal counsel to METCA Board
Editor of *The Waybill*, 2023 - present
Train Shows: METCA tables set-up, support, and sales, 2018 - present
METCA 60th Anniversary Celebration Team 14



Steven Flanagan

TCA 24-77875

Miller Place, NY

Objective: To run for Director of the Metropolitan Division

TCA Experience:

TCA MEMBER since 2024

Attended York shows since 2024

Eastern Division Member

Attended the Amherst Show since 2024

METCA Experience:

Member of METCA since 2025

Attended the York Show and volunteered at this month's Amherst show

Attended the York Annual meeting in 2025 regarding vendors

Background:

Employed at Wendys for 10 years

I Was a Junior Firefighter since 2014

Hobby Related Experience:

I am a Member of the Central Operating Lines O Gauge Model Railroad Club since

2017.

I joined the TCA Club at 25 Years old. I've been collecting O gauge trains since I was 13 years old and I still have some of my old collection. I'm the only one in my family who collects O gauge trains. My first O gauge train set was the Lionel Polar Express Set and then I bought the Lionel Scout Set.

METCA Goals: I will continue to support the METCA & Eastern Divisions as well as the TCA just like I have been since 2024 in a national way and encourage others to join the TCA

and the METCA & Eastern Divisions.

Watching families come and go from the train shows warms my heart to see others getting into the train hobby at METCA meets. Along with

the METCA board of directors I would ensure that everyone gets along and that everyone gets to say their piece and feelings to make shows a better place.



Stuart Rankin
TCA 87-25191
LionelLLC@hotmail.com
917-593-3990
Middletown, NJ

I am married with 3 daughters. I am a structural engineer with an office in New York City.

Position Sought:

METCA Director

TCA National Experience:

President - 2021-2022
President-Elect - 2020-2021
Vice President - 2019-2020
Internet Committee - 2004 to Present (Chairman 2012 to 2019)
Standards Committee - 2007 to Present
Convention Car Committee - 2010 to Present
Executive Committee - 2012 to 2022
Finance Committee- 2013 to 2025
National BOD Alternate - June 2011
Author of multiple articles for eTrain, the TCA online magazine

METCA Division Experience:

President - 2012 to 2013
Vice President - 2010 to 2011
Treasurer - 2008 to 2009
Bylaws Committee (Rules and Regulations) - 2007 to Present
Division Car Chairman - 2007 to Present
2015 Convention Co-Host
Author of several articles for The Waybill, the METCA Division Newsletter.

METCA Goals:

As Director, I intend to cultivate, nurture and mentor the next wave of METCA leadership. My prior years served on the METCA Board, climbing the ranks, as well as working my way through the TCA National BOD, have really opened my eyes. I'll be transferring that knowledge to METCA leaders to assist them in being able to be efficient without spending tons of time going through learning curves. I'll continue to develop the METCA Division Car programs as well as engage in positive Social Media interactions.

Personal Appeal:

I frequently say to people ... get involved. Well, if that advice is good for the goose, then it's good for the gander. I'm taking my own advice and reengaging with METCA in an official capacity. I urge you to vote in this election, regardless of which candidate(s) you vote for. Please get involved. I look forward to the support of the Division.



REPORT: METCA KIDS MODULAR RAILROAD CLUB COMPLETES ITS FIRST YEAR WITH A LONG STRING OF ACCOMPLISHMENTS

They started with nothing. Now, a year later, they stage their 21' by 9' modular layout at train shows and events with two Fastrack lines and a staging yard, all running on a Lionel Cab 2 system, with a large collection of rolling stock, and scenic design



features. They have their own banner; they designed their own logo. They are just getting started!

The bare modules themselves were donated by METCA and TCA Past President, Kevin Quinn, and Kevin Davis of the Kids Creek Railroad. Many more folks donated electronics, woodwork, Fastrack, tools, wiring, and supplies, all allowing the Club to remain within

its budget. The Club members constantly improve the modules, adding more features and capabilities.

The Club is moderated by METCA Vice President, Mike Hofmann, yet the young men readily take on the responsibility to manage the program and to make it work well.

For example, at a recent meeting the Club determined that it would be child friendly. No railcars, signage, or layout features would include references to tobacco products, alcohol, or graffiti; nor would suggestive images be allowed. Strategies to promote the Club on social media were discussed and adopted. On Facebook alone the club has more than 500 “friends.”

The young men addressed membership promotion and associated challenges, not least of which is the TCA mandate that members aged 6 to 17 be sponsored by a TCA member. Many parents who wish to encourage the model train hobby for their children may not be train enthusiasts themselves and have no inclination, or discretionary money, to join a national organization. This serves to suppress membership.



The Club members are particularly ambitious to present their layout at train shows. Most recently they traveled to Kingston, NY where their participation was very well received.

Plans are afoot to present their layout at the April 11, 2026 METCA/NYSME train show in East

Rutherford, NJ. Other shows in planning stages include the Lead East car show in Parsippany in September, the TCA York train show in October, the autumn METCA/NYSME train show in East Rutherford, NJ, the Hudson Valley train show, the Allentown train show, and the Greenberg train show, all in November 2026. In addition to train shows the Club members are exploring fundraising and Christmas/Holiday opportunities. If interested, please email METCAKids@gmail.com .

INTRODUCING THE NEW LOGO FOR THE METCA KIDS MODULAR RAILROAD CLUB!

By: Brian J.

METCA has played a big role in my interest in trains. I enjoy hanging out with familiar faces at their events and listening to their experiences, addons, and tips for their collections and layouts during meetings.

One of the clubs I belong to is the METCA KIDS MODULAR R.R. CLUB. The club helps promote the model railroading hobby by sharing their Lionel O gauge Fastrack modular layout with the public at shows and community events.

Recently, the METCA KIDS MODULAR R.R. CLUB. decided to come up with a new logo. As a leader of the club, I offered to play around with a few sketches while adding onto the existing METCA logo. After a few changes and some feedback, I settled on this design.



The MODULAR R.R. logo uses the METCA logo with added KID'S MODULAR RR CLUB text on an attached tender. I chose to add a tender for the logo as it felt fitting to “complete the look” of the steam locomotive in the METCA logo. Plus, I think most people picture a tender-engine locomotive when they think of steam locomotives. I'm very happy with the design and pleasantly surprised that it will be used to represent the club.

Somerset County New Jersey 4-H Trainmasters



METCA Youth Club

TRAINMASTERS FEATURED AT OPEN HOUSE

By: Mike Hofmann

The Pacific Southern Railway in Rocky Hill, NJ hosted the METCA Trainmasters Youth Club at their two day open house this past November, giving our youngsters a great opportunity to strut their stuff. The open house, located at the headquarters of the Pacific Southern Railway in the home of TV actor James Murray, was attended by hundreds of model train enthusiasts

Our young men were invited to set up and to run a small layout in the home's two-car garage, the perfect location for maximum interaction with the crowd. Pictured to the right are: Jennifer Fishinger, METCA V.P. Mike Hofmann, Stacey Walthers, CEO of Walthers Model Trains, and Trainmasters: Mike, Xander, Zack, and Sampson. Stacey spent time talking with the club members, to discover both their preferences in model train products in general, and in Walthers model train products in particular



Our thanks go out to James Murray for inviting our Club, for giving our young men so great an opportunity to interact with hundreds of model train folks, and for his generous hospitality. Pictured to right are Xander, Zach, Sampson, James Murray, Mike and Robert.

RAIL CAMP REFLECTIONS

By: Bernie H.

I attended National Railway Historical Society RailCamp during the summer of 2025, and it offered unforgettable behind-the-scenes experiences for me. There were many standout moments that immersed me in the real world of railroading. I spent the week sleeping in a dorm at the University of Delaware sharing a bathroom with another camper. The location was great due to it having the basic amenities. It was also close to many of the activities we did during the week. We were only 30 minutes from Amtrak's Wilmington shop and an hour from Strasburg.

I was able to attend RailCamp by submitting an essay and an application. The application required references from 2 teachers and 1 friend and a phone interview with me and my parents. I also needed to supply medical information and other basic personal information. I also had to meet the requirements of being between the age of 14-18, entering 9th-12th grade and have very strong interests in railroading.

Some of my most memorable moments were spending a late night watching high-speed operations along the Northeast Corridor and riding in the cab of the Strasburg Rail Road's famous steam locomotive No. 89. This is me getting into Strasburg No. 89





We got a tour of the extensive Amtrak Wilmington Shops where modern passenger equipment is maintained and rebuilt. This photo to the left is outside the Wilmington Shops

Inside the Wilmington Amtrak shop. The Amtrak workers were working on an Accela Engine while we were there.



We also experienced hands-on learning at the Amtrak Training Facility, where we saw how conductors, engineers, and dispatchers are trained. This is the Avila liberty/ Acela II simulator used to train new Amtrak Engineers. We got to see this in action while there.

These unique opportunities made the NRHS RailCamp a rare and inspiring look into both the history and future of rail transportation for me. The 4H

Trainmasters Club funds two qualified members each summer to attend NRHS RailCamp and I'm so happy that I was selected to attend in 2025. If you have a strong passion for railroading, then attending the NRHS RailCamp is a must for you!



Happy 100th Birthday, New York Society of Model Engineers!

For over a decade METCA has run its train shows in partnership with the New York Society of Model Engineers (NYSME). It is only fitting, therefore, that we celebrate with them the centennial of their founding. Happy 100th birthday, NYSME! So let's take a walk down memory lane and enjoy a brief history of our dear friends .

In the 1920's model railroading grew rapidly in popularity. A group of model railroad builders/enthusiasts in New York City came together with a similar group of model boat builders. Together they shared their techniques, their tools, their knowledge, their enthusiasm, and their fellowship; all formalized in 1926 with the creation of the New York Society of Model Engineers.

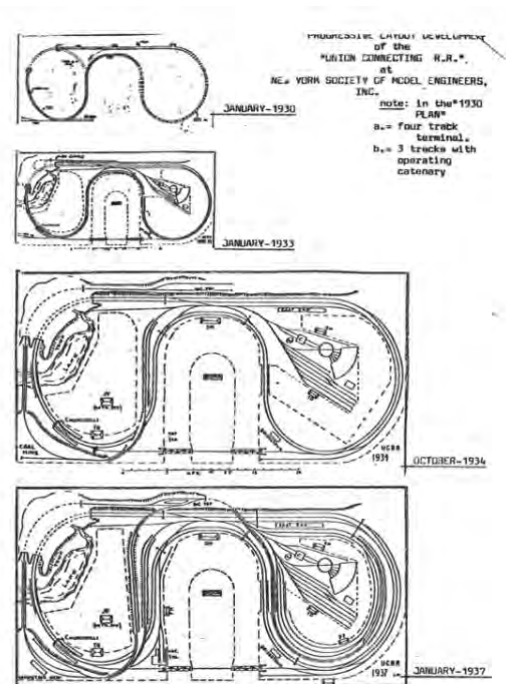
The Society acquired its first meeting space on West 39th Street. After a couple of moves, it was given space in the Knickerbocker Building on West 42nd Street by its owner (and NYSME member), Vincent Astor.



Astor was a remarkable character: heir to the great Astor fortune upon the death of his father, John Jacob Astor, on the Titanic; philanthropist; naval officer in WWI and WWII; and private civilian spy for President Roosevelt on Japanese naval operations in the Pacific, and on Soviet finances. Astor was also a great model train enthusiast.

The Society grew and prospered during the years between the World Wars. Members constructed several iterations of its Union Connecting Railroad layouts at the Knickerbocker Building during their long tenure there.

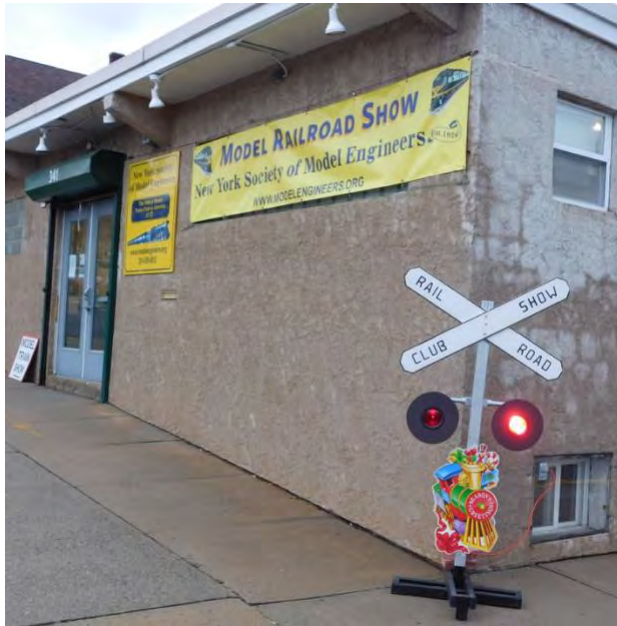
The end of World War II brought many changes, and the Society was not immune from them. So, in 1946 the Society was required to move to new quarters. It had the great good fortune to find a new home in Hoboken, NJ at the DL&W Railroad Terminal. where they remained for a decade.



At the Hoboken Terminal members built their HO scale Union, Hoboken, and Overland Railroad layout, the first of four versions. They also rebuilt and improved their O scale layout of the Union Connecting Railroad on the second floor of the terminal.



In 1956 the United States Post Office Department needed expansion room at the Hoboken Terminal, and so the Society again had to find a new home. They had had enough of renting space. This time they secured their own headquarters by purchasing the building located at 341 Hoboken Road in Carlstadt, NJ. It has remained their home ever since.



The Union Connecting Railroad is now in its fifth version. Through its several versions the layout was powered by outside third rail. Twenty-five years after arriving in Carlstadt, the technology and equipment became available,



and the layout was changed to two rail. The railroad is DC powered with block control and has the capability of switching to Bluetooth control.



The HO scale Union, Hoboken & Overland RR was created after moving into Hoboken. Three of its four versions have been built in Carlstadt.

All the layouts were DC powered block control. The current layout was converted to DCC using NCE equipment. The layout is fully signaled and detected. The main line is

dispatcher controlled using CTC. JMRI and CATS monitor the detection and set the signals. When a dispatcher is not available and a member wants to take his train for a spin, the signals can be set to automatic and the turnouts thrown from the command cabs.



And so that brings us to the present. To endure for 100 years, you must be doing something right! All of us at METCA, heartily congratulate the New York Society of Model Engineers, with admiration and esteem, upon the signal achievement of its centennial. We wish you many more years of success and enjoyment of our wonderful hobby!



Doug Chadwick
President

Ralph Russo
Secretary

Jeff Burek
Vice President

Lamar Karow
Treasurer

METCA STORE

LIONEL
CONTROL SYSTEM
LEGACY



Pennsylvania Northeastern LEGACY SD38

Custom Run Lionel Legacy Locomotives

Limited Reservations Spots Remain – Due mid-2026

Pre-order now at <https://metca.org/the-metca-store/>

While supplies last

LIONEL
CONTROL SYSTEM
LEGACY



Aberdeen Carolina & Western LEGACY SD38

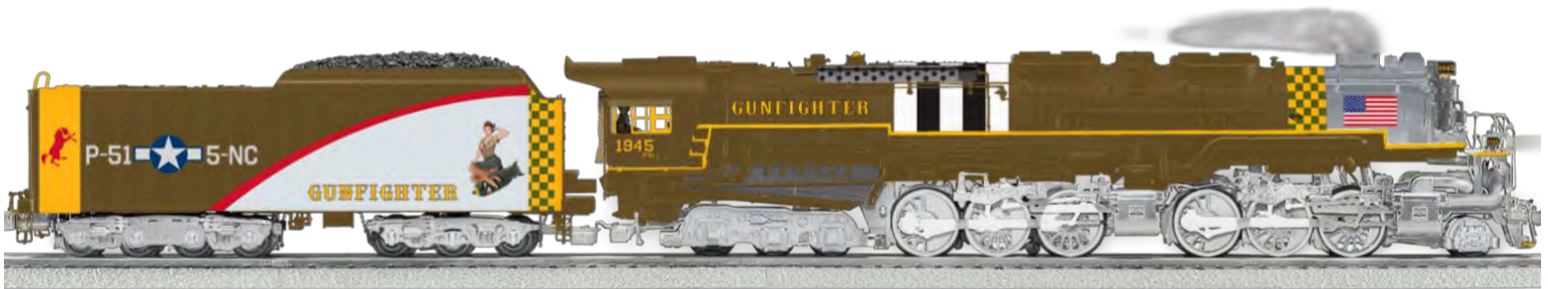


Get more info at:

<https://metca.org/the-metca-store/>



**LEGACY AC-9
American Freedom Train**



LEGACY Allegheny - Gunfighter



**Nickel Plate Road #222
LEGACY 0-8-0 w/swinging bell**



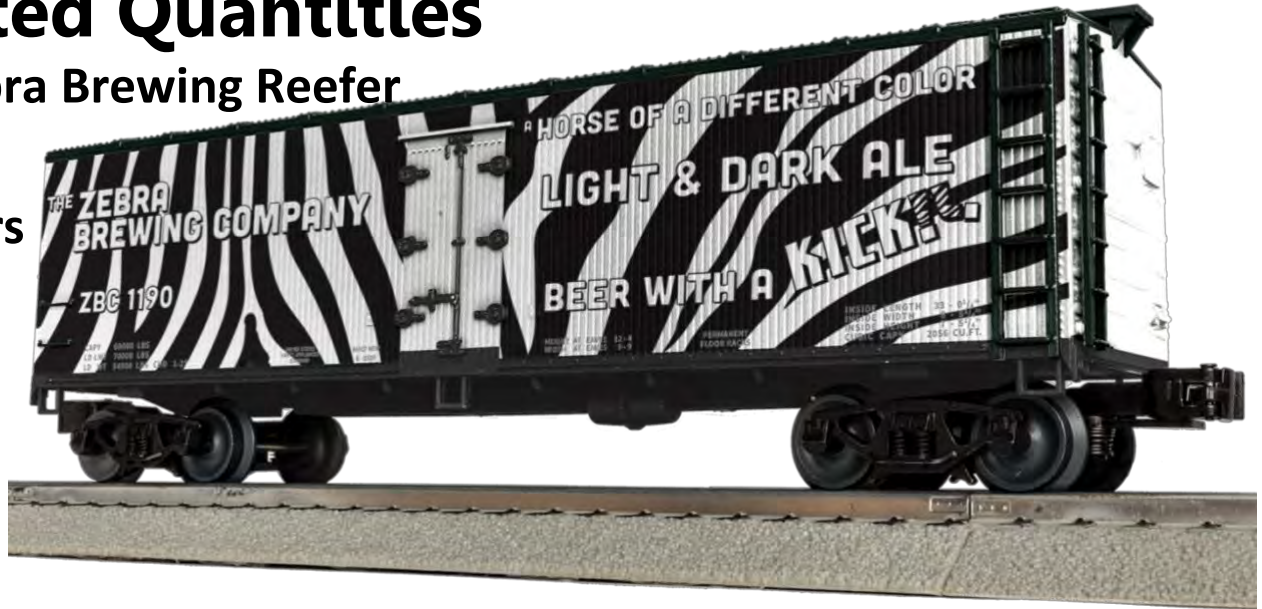
Now Available for Ordering:
<https://metca.org/the-metca-store/>



Limited Quantities

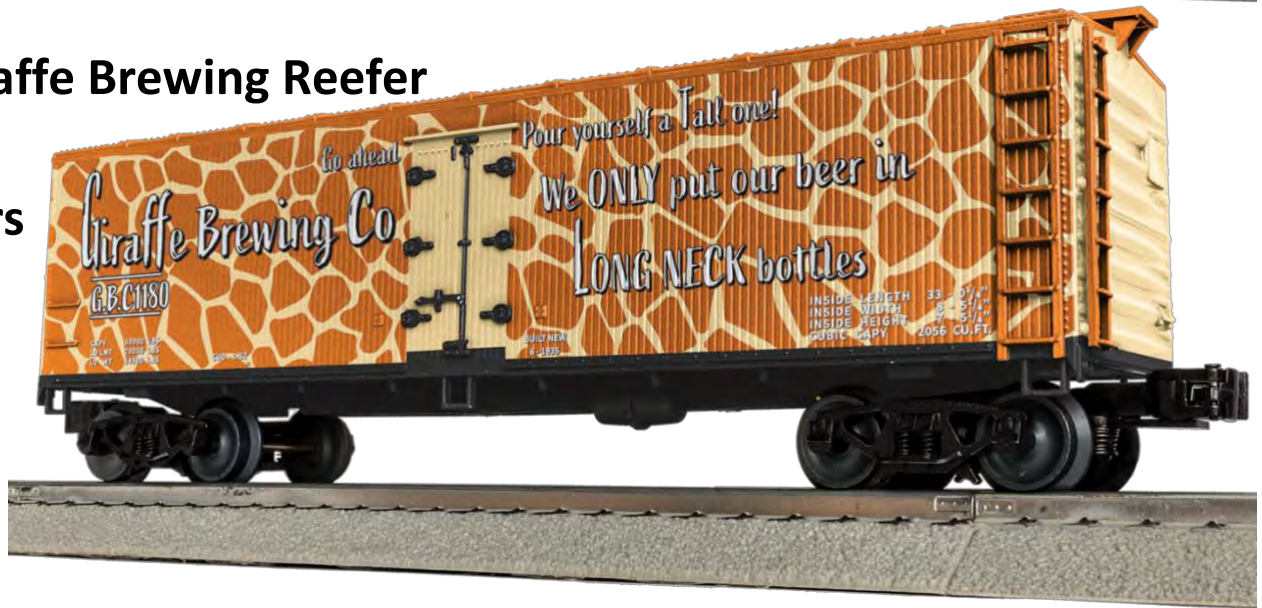
\$94.99 – Zebra Brewing Reefer

**\$179.99 for
2 Animal Cars**



\$94.99 – Giraffe Brewing Reefer

**\$179.99 for
2 Animal Cars**



\$114.99 – Natty Boh B&O Reefer

**\$269.99 for
All 3 Reefers**





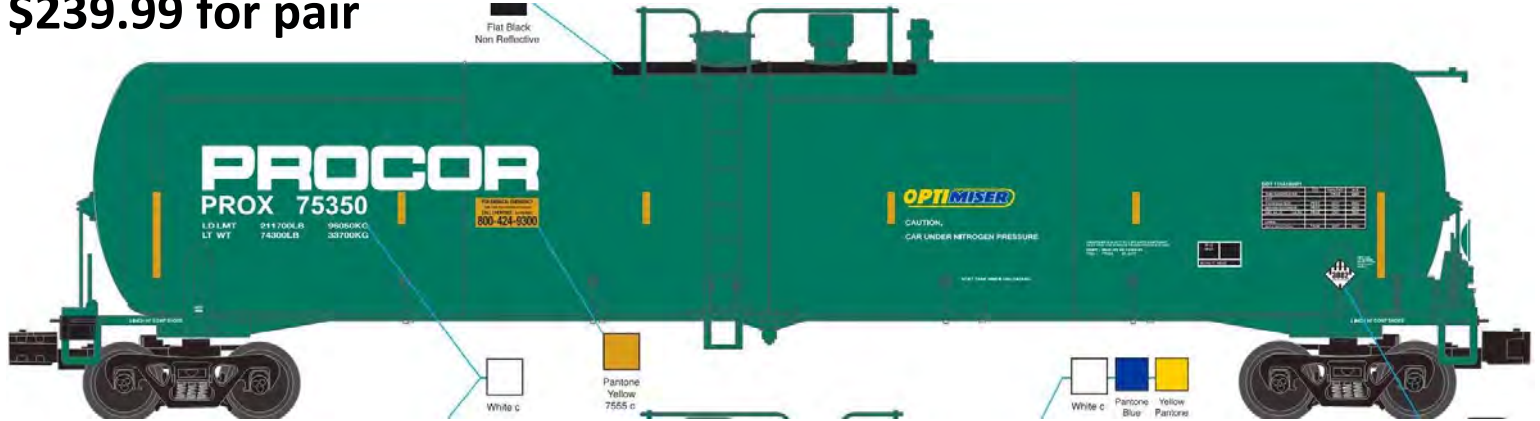
Now Available for Ordering:
<https://metca.org/the-metca-store/>



Limited Quantities

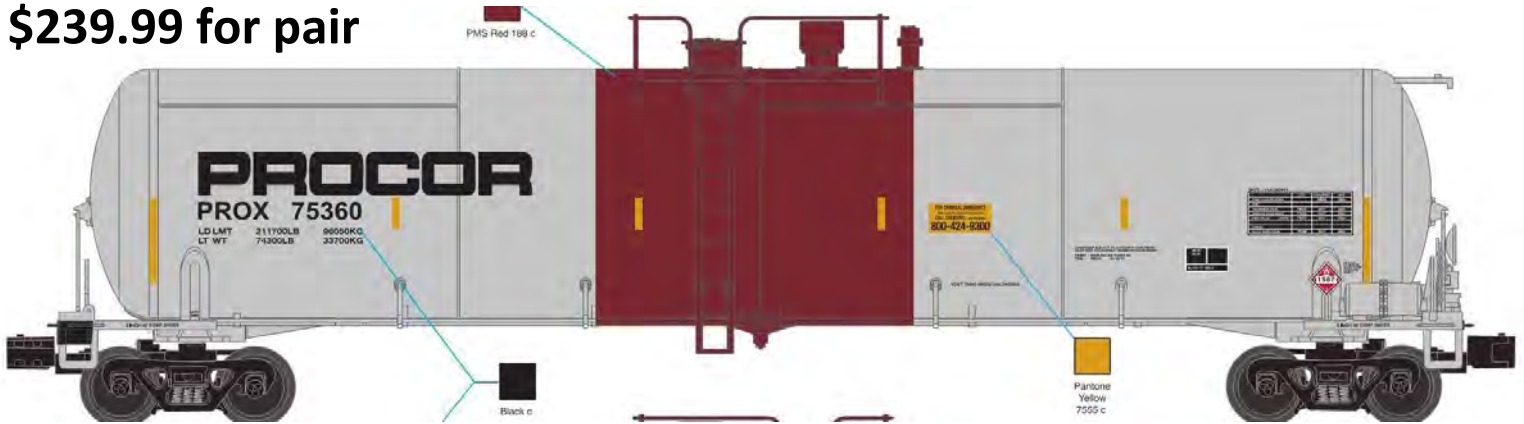
\$124.99 – Procor 30k Tank Car (green)

\$239.99 for pair



\$124.99 – Procor 30k Tank Car (gray)

\$239.99 for pair



Fort Wayne Tool Car – Prototypical 2 Sides

Aluminum Construction - Accurate Roof

\$269.99



METCA & NYSME Train Show

Saturday, April 11, 2026

St. Joseph's School

120 Hoboken Rd., East Rutherford, NJ 07073

Less than 1 mile from MetLife Stadium



Coupled up
for a Great
New Jersey
Show



METCA/TCA/NYSME members admitted at 8 AM ~ Public at 9 AM ~ Show Runs until 2 PM

New Vendors! Door prizes! New Friends! Great trains!

Entrance to School and spacious parking lot off Hoboken Rd. (Road signs will be posted)

Easy access from Rt. 17 north & south

Going south on Rt. 17, make right onto Hoboken Rd., three short blocks to school on left.

Going north on Rt. 17, take exit for Rt. 120, make left at top of ramp, cross over Rt. 17, make 1st right towards Hoboken Rd., make left onto Hoboken Rd., three short blocks to school on left.

Added attraction: NYSME Club layouts will be open (at 12 noon) FREE to attendees.

Please reserve ___ tables at the Show @ \$25.00. Each paid table includes 1 admission. \$ _____

Additional Admission fee(€) @ \$5.00 each. Children younger than 16 and wives are admitted free. \$ _____

Due to increased costs, the buy 3 and get the 4th table free is no longer available.

Total of Check or Money Order: \$ _____

NOTE: RESERVED TABLES MUST BE PAID FOR TWO WEEKS PRIOR TO SHOW

Waiting list will be filled from unpaid tables. Contact NYSME Office 201-939-9212 for availability.

E-Mail - contact@modelengineers.org Table reservations will be confirmed once received.

Set up begins at 7:00 AM. "Reserved tables" held until 9:00 AM.

Make registration checks payable to: NYSME

Mail to: NYSME, 341 Hoboken Road, Carlstadt, NJ 07072

Name: _____ Phone: (____) _____

Address: _____ City: _____ State: _____ Zip+4: _____

Email Address _____ TCA# _____

Standards Statement: By applying for tables, I agree to comply with all of the rules and regulations of the Train Collector's Association (TCA).

MYSTERY MOTOR CHALLENGE!

(SEE PAGE 5)

