

# NETCA DIVISION TCA NEWSLETTER

JANUARY 21, 2001

Hello METCA MEMBERS,

I hope everyone had a wonderful holiday season and that good things are happening in 2001.

**HAPPY ANNIVERSARY TO US!** METCA Division is now 40 years old, and with your continued support, we hope to be around at least 40 more years. As a special feature for our 40th, we will feature some "bits of history" in our newsletter. And now into the 21st Century, METCA HAS A WEB SITE! Thanks to John Minster with kudos to Ben Deutschman. Visit us at: [METCA.FREEYELLOW.COM/METCA.HTML](http://METCA.FREEYELLOW.COM/METCA.HTML) with links to and from the TCA web site. (DON'T USE WWW)

Our November 12th show was very well attended. All paid dues members received a wind-up-trolley as a holiday gift as well as a Lionel catalog. Kids received a past year METCA Christmas ball. The winner of our 2000 Free Dues Payer drawing of a 1994 York Banquet Car was Phillip Timpone. The winner of the York Bay Window Caboose raffle was Robert E. Mirda. The Grand Prize winner of the Kids Club prize package was Christopher Jones, son of METCA member, James Jones. There were many exciting door prizes given out throughout the day, including a Lionel car donated by Tom's Trains, a train video donated by HST Videos, 2 Lionel Hallmark ornaments from Gregory Gwynn Williams of Barons Drugs in Westfield, NJ, and 2 Lionel Hallmark ornaments from Robert Gassaway of the Roundhouse. All in all, there were many happy people at our show. The Kids Club set up was as great as ever. There were more kids in attendance ( about 75 ) than ever before. Word is getting out about all we do for kids at our meets. NOTE parents and grandparents; make sure we have the correct address for kids club members. We did a special mailing for kids and 4 were returned for incorrect addresses.

Check out the details of our new fund raiser raffle. Also something new The METCA Store. Now you can buy some of the items we have in our inventory by mail.

The METCA Train Show was featured in an article in the November issue of ANTIQUES GUIDE. We have been getting a lot of coverage for our shows in the press. Along with ads in The Bergen Record, The Star Ledger and The Daily Record, we get listings in MODEL RAILROADER, CLASSIC TOY TRAINS, TREASURE CHEST, KIDS MONTHLY, SUBURBAN ESSEX MAG, PARENT'S GUIDE, STAR LEDGER TICKET & COMMUNITY BULLETIN BOARD, DAILY RECORD TGIF, INDEPENDENT PRESS, NEIGHBOR NEWS, MASTER COLLECTOR, UNION LEADER, SUBURBAN LIFE and COMMUTER NEWS.

This year is an election year for METCA. Please let me or any board member know if you are interested in running.

The train world recently lost an important member, Frank Pettit. Mr. Pettit was an inventor and among other things was the inventor of the automatic uncoupler. He also freelanced for Tyco and MTH. He will be missed.

Hope to see you at the show.

*Lee Minster*  
Your METCA President,

## PLEASE REMEMBER!!!!!!

THIS MAILING INCLUDES A FLIER FOR PAL HALL SHOWS FOR 2001, OUR BOARD OF DIRECTORS MEETING MINUTES, A COPY OF THE FEBRUARY 1982 METCA NEWSLETTER, OUR 7TH FUND RAISER RAFFLE, A COPY OF THE NEW TCA NATIONAL MEMBERSHIP APPLICATION (YOU CAN MAKE PHOTO COPIES OF THIS) AND A 2001 DUES FORM. WE CANNOT DO PERSONALIZED MAILINGS, EVERYONE GETS THE SAME PACKAGE OF INFO. THAT'S WHY YOU HAVE A 2001 DIVISION DUES FORM IN THIS MAILING. IF YOU HAVE PAID YOUR 2001 DUES WE THANK YOU AND JUST DISREGARD THIS NOTICE.

## REMINDERS:

AS WE DID THE LAST FEW YEARS WE WILL AGAIN HAVE A "FREE DUES PAYERS ONLY DRAWING" AT OUR NOV. 11th SHOW. THIS YEARS PRIZE WILL BE ANNOUNCED AT A LATER DATE.

WE WILL ALSO HAVE A "7TH FUND RAISER RAFFLE" TO BE DRAWN AT OUR NOVEMBER 11TH SHOW, THE PRIZE WILL BE A 1998 TCA 44th NATIONAL CONVENTION MASSACHUSETTS CENTRAL MAXI-STACK 2 CAR SET MADE BY LIONEL#6-52142.

THE BOARD OF DIRECTORS HAS APPROVED A "DISPLAY ONLY TABLE CATEGORY" THESE TABLES ARE FREE FOR THOSE WHO HAVE TRAIN PRODUCTS AND RELATED ITEMS THAT THEY WISH TO DISPLAY OR FOR LAYOUTS THEY WOULD LIKE TO SETUP AND RUN TRAINS ON. THERE WILL BE NO SELLING OF ANY KIND ALLOWED ON THESE TABLES. FOR MORE INFO CONTACT LEE MINSTER.

PLEASE NOTE!!! WHEN SENDING US A CHECK FOR DUES, RAFFLE TICKETS, ADMISSIONS OR TABLES PLEASE SPECIFY WHAT THE MONEY IS FOR. SINCE DUES, RAFFLES AND ADMISSIONS CAN ALL BE \$ 3.00, IT IS SOMETIMES HARD TO KNOW WHAT THE PAYMENTS ARE FOR WHEN SOMEONE PUTS A CHECK FOR \$ 3.00 IN AN ENVELOPE AND MAILS IT TO US. WE RECEIVE A LOT OF MAIL THIS WAY. PLEASE HELP!!!

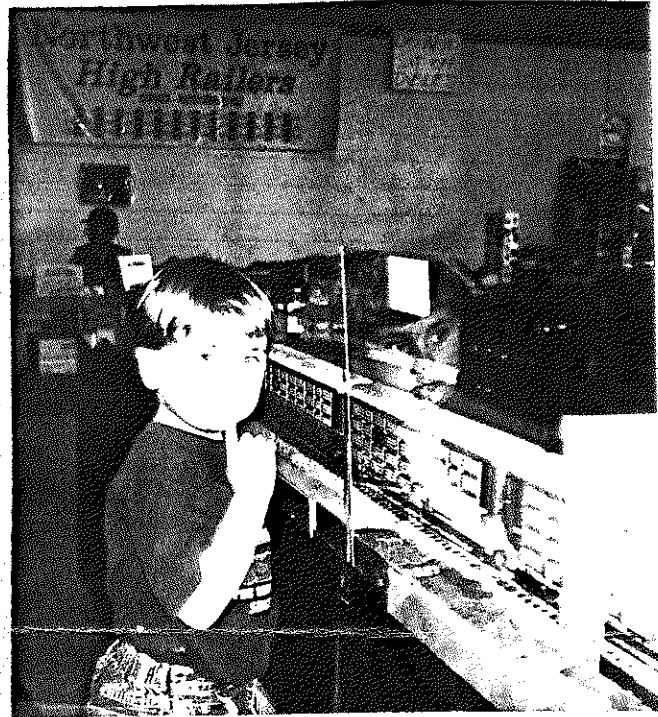
TABLE HOLDERS ARE REMINDED THAT THE STATE OF NEW JERSEY REQUIRES THAT TABLE HOLDERS BE REGISTERED WITH THE DIVISION OF TAXATION AND CHARGE AND COLLECT SALES TAXES.

MEMBERS WHO ARE SIGNING UP NEW APPLICANTS PLEASE REMEMBER THAT ALL APPLICATIONS MUST HAVE ORIGINAL SIGNATURES NO PHOTO COPIED ONES. THE BLANK APPLICATIONS CAN BE PHOTO COPIED.

IF YOUR MAILING LABEL HAS ANY ERRORS EITHER CONTACT OR DIVISION SECRETARY BY PHONE OR MAIL OR DROP OFF THE CORRECTED LABEL AT THE REGISTRATION DESK AT ONE OF OUR UPCOMING SHOWS.

**NOVEMBER 12th, 2000  
METCA SHOW  
PICTURE HIGHLIGHTS**

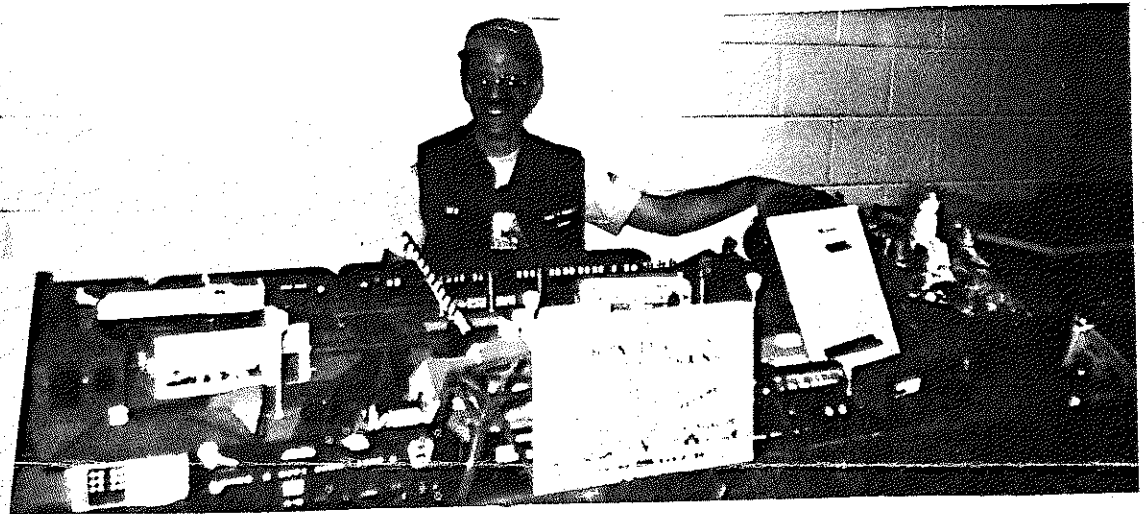
YOUNGSTER ADMIRING THE NORTHWEST JERSEY  
HIGHRAILERS BEAUTIFUL LAYOUT (TO THE RIGHT)



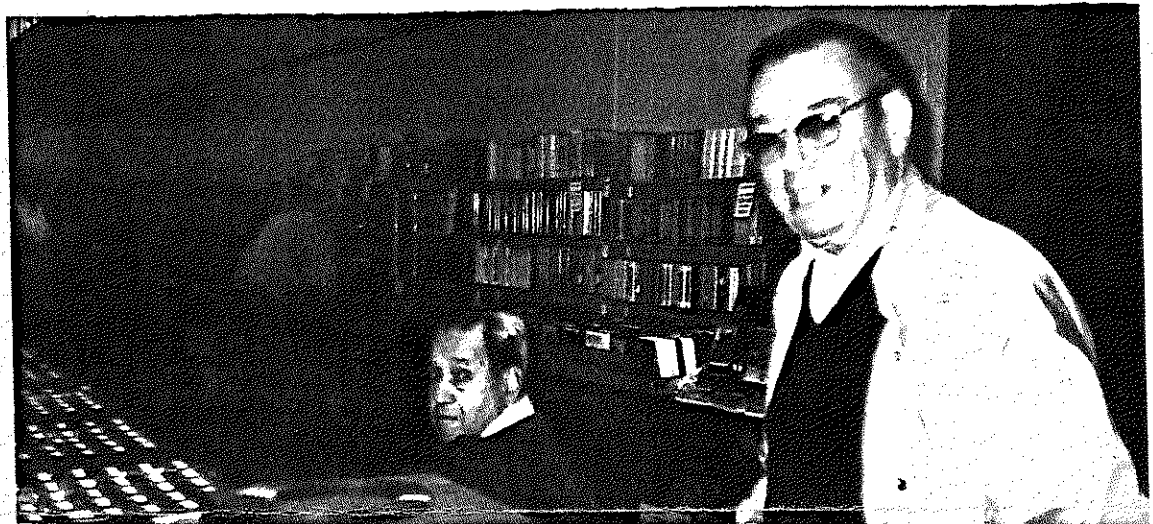
KIDS CLUB 2000  
GRAND PRIZE WINNER  
CHRISTOPHER JONES  
WITH KIDS CLUB REP.  
TABATHA (BELOW)



BEN DEUTSCHMAN  
WITH HIS  
OPERATING LAYOUT



PAT SCUORZO SR.  
AND DIRECTOR  
PAUL DI NATALE



DIRECTOR STEVE SINIAWA  
PRESENTING THE 1994 YORK  
BAY WINDOW CABOOSE  
TO RAFFLE WINNER  
ROBERT E. MIRDA

